

# PLAT OF S. E. WILLOUGHBY BOULEVARD

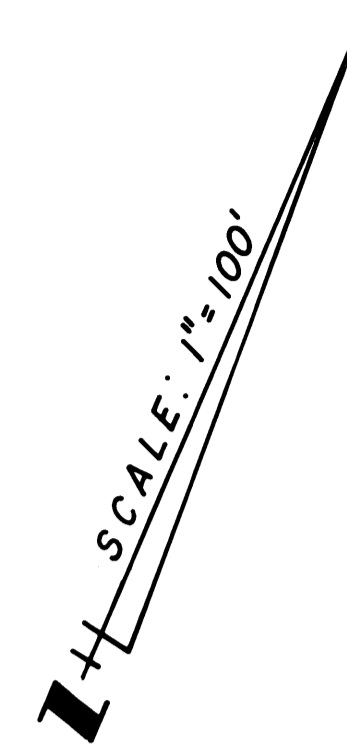
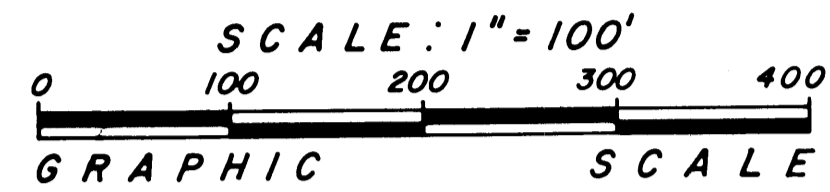
BEING A TRACT OF LAND LYING IN THE HANSON GRANT SITUATED IN MARTIN COUNTY, FLORIDA.

I, MARSHA STILLER, CLERK OF THE CIRCUIT COURT OF MARTIN COUNTY, FLORIDA, HEREBY CERTIFY THAT THIS PLAT WAS FILED FOR RECORD IN PLAT BOOK 11, PAGE 57, MARTIN COUNTY, FLORIDA, PUBLIC RECORDS, THIS DAY OF \_\_\_\_\_, 1988.

MARSHA STILLER, CLERK  
CIRCUIT COURT  
MARTIN COUNTY, FLORIDA

BY: \_\_\_\_\_  
DEPUTY CLERK

FILE NO. \_\_\_\_\_



PORT SEWALL  
P. BK. 3, PG. 7, P.BCH.  
(NOW MARTIN)  
ABANDONED  
O.R. BK. 778 PG. 2246

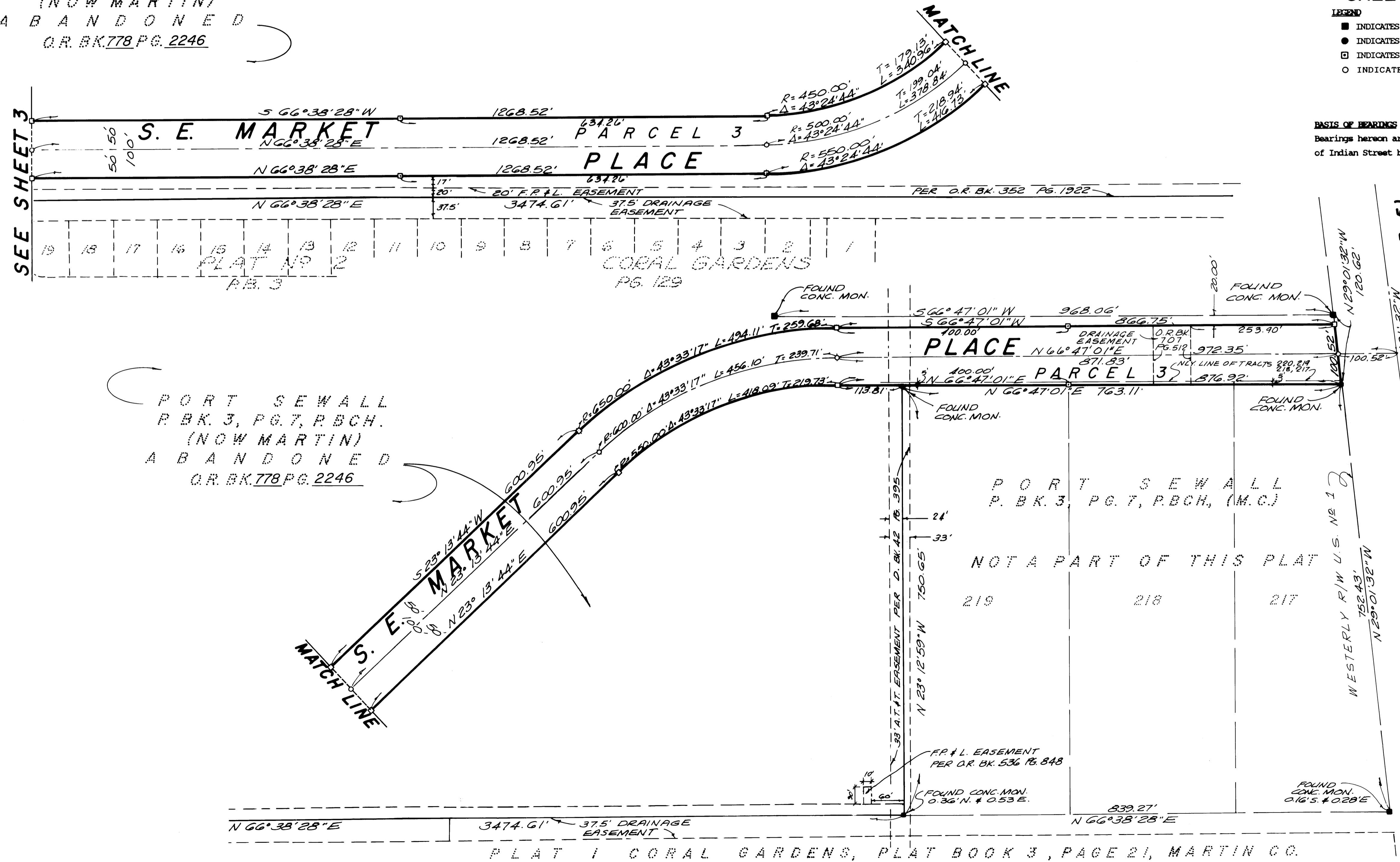
SEPT. 1988

**Hutcheon Engineers**  
CIVIL ENGINEERS & SURVEYORS  
11 East Ocoola Street, Stuart, Florida 34994  
BELLE GLADE WEST PALM BEACH STUART

SHEET 4 OF 4

- LEGEND
- INDICATES FOUND CONCRETE MONUMENT AS NOTED
  - INDICATES FOUND IRON PIPE AS NOTED
  - INDICATES SET P.R.M. AS NOTED
  - INDICATES PERMANENT CONTROL POINT (PCP)

BASIS OF BEARINGS  
Bearings hereon are based upon the South line of Indian Street being North 66°44'28" East.



PORT SEWALL  
P. BK. 3, PG. 7, P.BCH.  
(NOW MARTIN)  
ABANDONED  
O.R. BK. 778 PG. 2246

PORT SEWALL  
P. BK. 3, PG. 7, P.BCH., (M.C.)

NOT A PART OF THIS PLAT